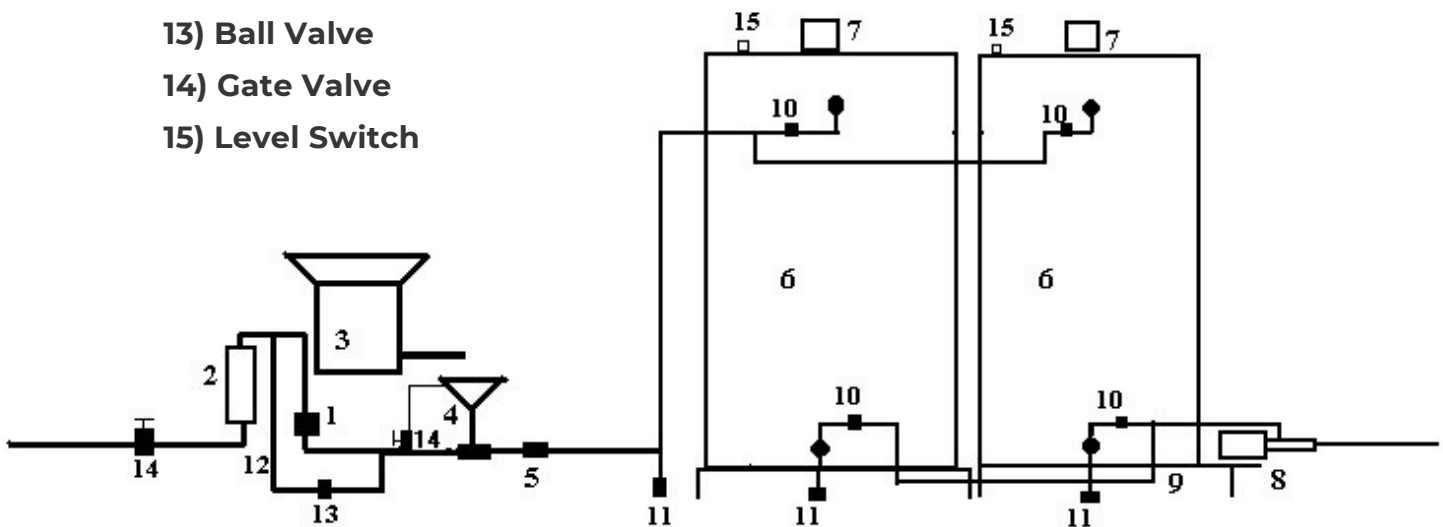


SVENMIX POLYMER MIXING SYSTEM

PROCESS DIAGRAM

- 1) 1" Solenoid Valve (115v 1ph)
- 2) Flowmeter
- 3) Volumetric Feeder (230v 3ph (VFD))
- 4) Eductor Funnel
- 5) 1" Check Valve
- 6) Polyethylene Tank
- 7) Svenmix Low Speed Mixer (115v 1ph)
- 8) Progressing Cavity Pump (230v 3ph (VFD w/ 4-20mA))
- 9) Tank Stand
- 10) 1" Isolation Valve
- 11) 1" Drain Valves
- 12) By-Pass Line
- 13) Ball Valve
- 14) Gate Valve
- 15) Level Switch



Control Panel will start-up Volumetric Feeder and Solenoid Valve and keep them energized until the level in the tank closes the level switch. This will shut down the Solenoid Valve and Feeder and close the Isolation Valve on the tank just filled and open the valve on the other tank. Isolation Valves can be manual depending upon how much manual control is required.

The Progressing cavity pump should be controlled from the panel at the Belt Filter Press.